

## Floor Drains and Collecting Tanks

### Floor Drain with Stainless Steel Grate and Central Drain - Horizontal outlet 400x500 mm

ITEM # \_\_\_\_\_

MODEL # \_\_\_\_\_

NAME # \_\_\_\_\_

SIS # \_\_\_\_\_

AIA # \_\_\_\_\_



328066 (FDD4050)

Floor drainage channel with s/  
s grate, central drain -  
horizontal outlet, 400x500

### Short Form Specification

Item No. \_\_\_\_\_

Constructed in 304 AISI stainless steel. Collecting tank with central siphon and horizontal drain pipe. Anti-slip mesh grate.

### Main Features

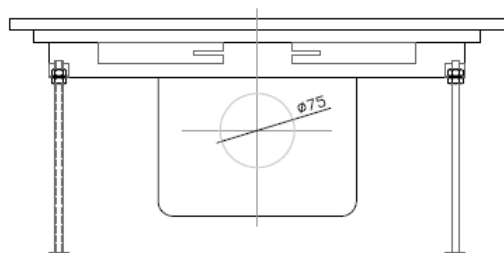
- Easy to install.
- Anti-odour syphon.
- Removable waste blocking filter.
- Rag bolt for floor fixing.
- Easy to inspect for any possible waste removal action.
- Electrochemical finishing gives grids a bright appearance.
- Ideal for any drain solution, particularly suggested for great amounts of water drained during cleaning operations.

### Construction

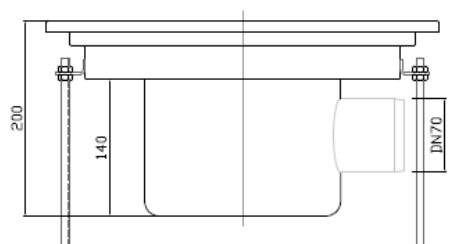
- Adjustable leveling feet.
- Anti-slip mesh 25x25 mm grating, h=25 mm, 1.5 mm in thickness.
- Collecting tanks available with horizontal drain pipe.
- Constructed entirely in 304 AISI stainless steel.
- Collecting tanks with central siphon.

APPROVAL: \_\_\_\_\_

**Front**

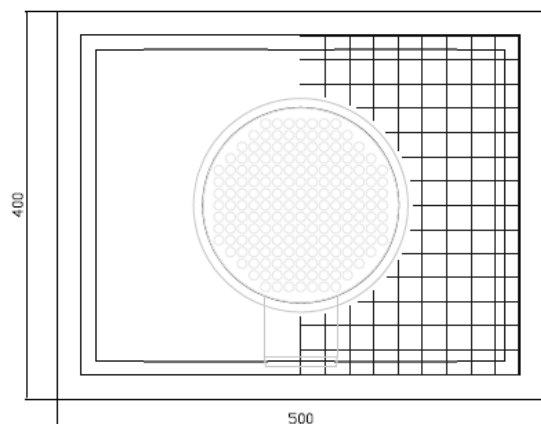


**Side**



**D** = Drain

**Top**



**Key Information:**

External dimensions, Width:

328066 (FDD4050) 500 mm

External dimensions, Depth:

400 mm

External dimensions, Height:

200 mm

Net weight:

10 kg